

PROCENTA®

THE FUTURE OF PLACENTAL
DERIVED ALLOGRAFTS



SPARTAN™
M E D I C A L

PROCENTA® IS A
UNIQUE, HYDROPHILIC,
ACELLULAR BIRTH
TISSUE ALLOGRAFT
MADE FROM
VISCOELASTIC SOFT
CONNECTIVE TISSUE.

Procenta® is packaged sterile,
hydrated and ready-to-use.

PHYSICAL PROPERTIES

- ✓ Provides a conformable, adherent scaffold to cover a site of injury
- ✓ Requires no orientation
- ✓ Protects the site from surrounding environment
- ✓ Retains fluid at the site
- ✓ Minimal manipulation
- ✓ 3-year shelf life

Strict adherence to FDA CFR Title 21, Part 1271, HCT/P (Human Cells, Tissues, and Cellular and Tissue-Based Products) regulations



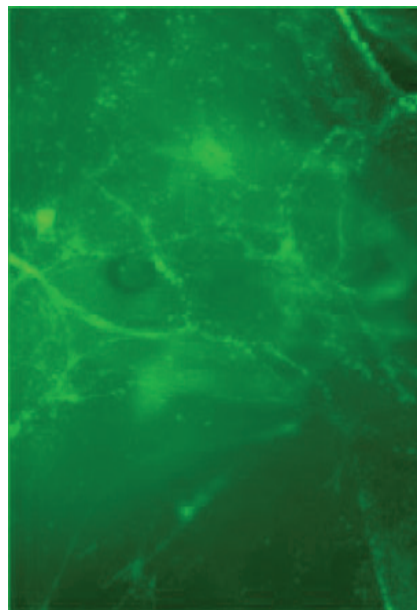
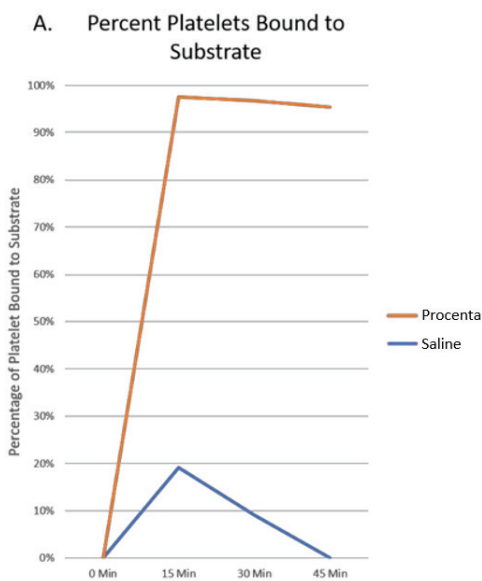
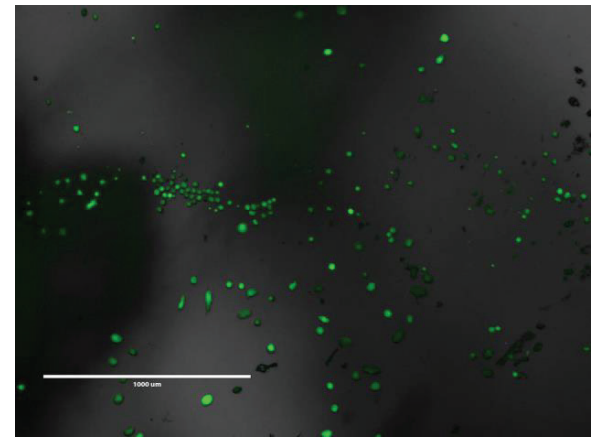
✓ Study Method:¹

Procenta® was combined with human bone marrow marrow-derived MSCs in non non-coated 12-well plates and then placed in non non-supplemented DMEM [no growth media (e.g. FBS)] and seeded with 10,000 MSCs.

✓ Results:¹

Procenta® established hMSC cultures showing viable cell populations. These observations illustrate the ability of Procenta® to serve as a viable platform for cells from the recipient of the allograft to infiltrate and initiate the appropriate biological processes.

¹ Dregalla, R.C. *Nativus, a Novel Tissue Processing Method, Promotes Human Stem Cell Survival, Attachment and Proliferation.*



✓ Results:²

Platelets quantified in solution indicate adhesion to the Procenta® graft in contrast to the saline control where platelets remained in suspension. This observation was confirmed via fluorescent microscopy.

² Dregalla, R.C. *Procenta® Binds and Immobilizes Human Platelets for Concise Delivery to Soft Tissue Injuries*

✓ Study Method:²

A total of 38 mL of whole blood was collected into acid citrate and centrifuged for 5 minutes at 1,150 xg. The resulting plasma fraction was collected (~20mLs). The plasma was split into two 10mL aliquots and further centrifuged at 2,200 xg for 5 minutes. The resulting platelet pellets were resuspended in 1mL phosphate buffered saline (PBS). Procenta® (250mg) was added to one tube and saline (250uL) to the second. Tubes were incubated at 37C in a shaking water bath for 45 minutes; 10µl samples of the platelet suspension was collected from each at 15 15-minute intervals, dual labeled with CD61 (platelets) and calcein (viability). Platelet quantification was determined via flow cytometry.

ORDERING INFORMATION

DLIN	CLIN	CATALOG #	SIZE
DLIN3160	CLIN2379	001025	100mg
DLIN3161	CLIN2380	001050	200mg
DLIN3162	CLIN2381	001075	300mg

DLIN references
National DAPA Contract #: SP0200-19-H-0051

CLIN references
National IDIQ VA Contract #: 36C10G18D0143

AATB Accredited Tissue Distribution Intermediary:
Parametrics Medical, LLC
2006 South Bagdad Rd, Suite 100
Leander, TX 78641
Phone: 888-494-2240

Manufactured by:



LEARN MORE:

Contact Spartan Medical Inc.

(888) 240-8091

CS@SPARTANMEDSPINE.COM



SPARTAN MEDICAL INC.

1445 Research Blvd, Suite 520,
Rockville, MD 20850

spartanmedspine.com

DUNS: 807438341 | CAGE:65VT5

