

PROCENTA[®]

PLACENTAL-DERIVED ALLOGRAFT



SPARTAN[™]
M E D I C A L

WHAT IS PROCENTA[®]?

Procenta[®] is an acellular placental-derived graft made from soft connective tissues that is hydrophilic, sterile and requires no re-hydration or orientation.

CAPABILITIES

- Provides a conformable, adherent scaffold to cover a site of injury
- Protects the site from surrounding environment
- Retains fluid at the site
- Minimal manipulation

APPLICATION

Remove graft from the vial and apply to the surface of the wound. Cover with a non-adhering, impregnated dressing.

* Refer to Product IFU

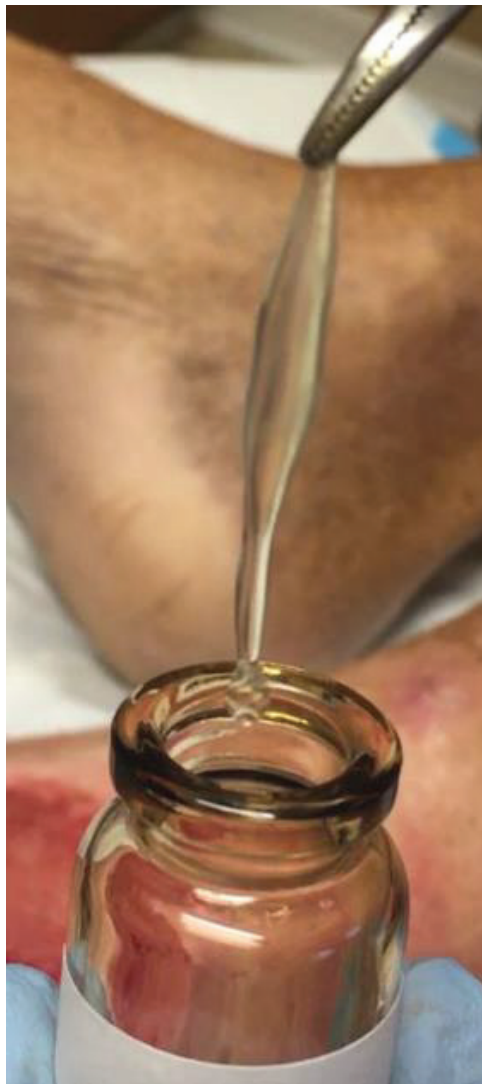
ORDERING INFORMATION

DLIN	CLIN	CATALOG #	SIZE
DLIN3160	CLIN2379	001025	100mg
DLIN3161	CLIN2380	001050	200mg
DLIN3162	CLIN2381	001075	300mg

Product Reimbursement - CMS Level II HCPCS Code Q4244

DLIN references
National DAPA Contract #: SP0200-19-H-0051

CLIN references
National IDIQ VA Contract #: 36C10G18D0143



Strict adherence to FDA CFR Title 21, Part 1271, HCT/P (Human Cells, Tissues, and Cellular and Tissue-Based Products) regulations


**AATB Accredited Tissue
Distribution Intermediary:**
Parametrics Medical, LLC
2006 South Bagdad Rd, Suite 100
Leander, TX 78641
Phone: 888-494-2240

Manufactured by:

 **Lucina**
simple. life changing.

LEARN MORE:

Contact Spartan Medical Inc.

 (888) 240-8091

 CS@SPARTANMEDSPINE.COM



SPARTAN MEDICAL INC.

1445 Research Blvd, Suite 520,
Rockville, MD 20850
spartanmedspine.com
DUNS: 807438341 | CAGE:65VT5

